


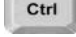



How To Join and Add Images to the ARLIS/NA Annual 2008 Flickr Group

1. Join the ARLIS/NA Annual 2008 group*
 - a. Go to <http://www.flickr.com/groups/arlisna08/>
 - i. Click on "Join this group?" in the upper right-hand corner » [Join this group?](#)
 - ii. Click on the "OK JOIN" button 
2. To add images

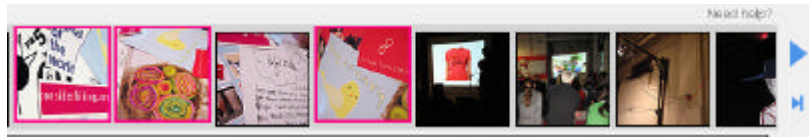
- a. Click on "Organize" in the upper left-corner 
- b. Click on the "Groups" tab at the top 
- c. Select the images to add

- i. To select more than one image, hold down your computer's command key while clicking on more images

1. Ctrl key on PCs 

2. Open-Apple key on Macs 

- ii. Depress the command key



- iii.
 1. Selected images will be slightly raised and their edges will be highlighted

- d. Click one of the selected images
 - i. While continuing to hold the mouse button down, drag the image on top of ARLIS/NA Annual 2008 group icon



- ii.
 1. The group icon's border will become yellow when your image is placed properly on top of the icon
 - a. This visually indicates that the group has been selected to receive your images
 2. The total number of images you are adding to the group is shown under the image you are dragging
 - a. In this case, 3 images (i.e. "things")

- e. Depress the mouse button
- f. You will receive a confirmation like this once Flickr has added your images



- i.

*This assumes that you already have a Flickr account. If you don't, it is free and easy to join. To learn more, please go to <http://www.flickr.com/tour/>

Thanks,
Bryan Loar & Tom Riedel

Ver. 1.0
May 16, 2008